



ISKRAEMECO Factory-Egypt Work Shop And Office WIFI Coverage

Customer Profile

Name: Iskraemeco Energy Measurements S.A.E.
Sector: Production factory
Capacity: 300 employees. Office and workshop
Location: Plot 27, 1st District, 5th Settlement, New Cairo
Year of project: April 2018

▼ BACKGROUND

The beginnings of Iskraemeco, go back to 1945, and the production of single phase electromechanical meters has been taking place in Kranj since 1946. Iskraemeco upgraded the mechanical technology with electronic, and in 1975 started the production of precision electronic meters. To date, they have supplied customers with more than 50 million products, almost 2 million of which are electronic. In 1986, Iskraemeco set up the first system for metering and billing electricity. It's proud that all the products from Iskraemeco programme are based on their own knowledge and numerous patents.

In terms of sales of meters they are among the largest in the world; their products with the Iskra trademark are today familiar in almost one hundred countries in all five continents. Iskraemeco is today a provider of system solutions and is extending the business to the provision to services in the area of electricity metering and billing. The opening of the electricity market offers opportunities for new solutions, which are a major challenge for their experts today and in the future.

They began to sell their products abroad already after the first decade, at first in only a few countries, but over the years throughout the world. In addition to the export of final products, they have also successfully established their selves in the transfer of technology and the sale of licenses for the production of meters on foreign markets. For the last ten years they have followed the aspiration for globalization by getting closer to customers in various markets through the founding of local companies. Iskraemeco successfully unite experience with innovations and new technologies in order to satisfy various needs in the sphere of electricity metering and billing.

▼ CHALLENGE

Iskraemeco experienced several ongoing issues with its old wireless network including loss of network signal, weak signal or disconnection, strained network capacity, inefficient network management, and the mismatch between the old Solution of the wireless access points and the design of the Factory. After evaluation and assessing the whole set-up, they realised it was time to implement a new wireless network and created these requirements. Iskraemeco wanted to have uninterrupted WiFi connectivity that's easy to manage.

Coverage:

Transmit a network signal throughout all 15 offices and warehouse which is around 200 Square meters, plus workshop section near 1000 sq. meter.

Capacity:

Deliver a network with sufficient bandwidth to up to 300 simultaneous user devices. There had to be sufficient capacity to support any spikes in network traffic.

Management Software:

Allow network administrators to an intuitive, efficient method to manage, monitor and control the entire wireless network from a single location. In addition, network management had to be user-friendly and efficient, so that the IT personnel can easily view graphical reports of wireless usage and quickly manage the wireless network.

Industrial Design:

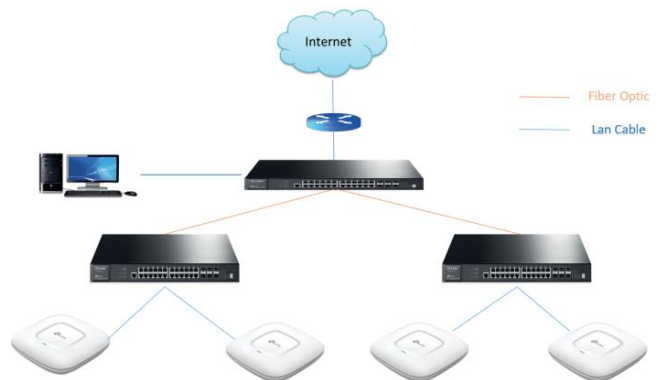
The aesthetics of the wireless access points had to blend in with the factory architecture. In addition, wireless access points had blend effortlessly and naturally with the office interior design.



Based on the Iskraemeco, TP-Link technical teams checked the layout and offered a heat map for them. In this heat map, the technicians were able to calculate all coverage and interference issues to help & provide the best solution for Company.

▼ SOLUTION

To address these challenges and provide a robust WiFi signal in all the places, management sought to deploy a wireless network that had to fulfil the following demands in terms of coverage, capacity, reliability and centralised management. The TP-Link technical team performed a wireless survey, wireless heat map and the POC for three weeks.



AC1750 Wireless Dual Band Gigabit Ceiling Mount Access Point



8-Port 10/100Mbps Desktop Switch with 4-Port PoE

It was concluded that could provide seamless wireless coverage by using:

- 25pcs. Dual Band Ceiling Mount Access Point, Qualcomm, 1300Mbps at 5GHz + 450Mbps at 2.4GHz, supports PoE connection.
- 1pcs, fast port POE switch.



In addition, the captive portal provides a convenient method for guest authentication, while band Steering Automatically moves dual band devices onto the wider 5GHz band for faster connections.

The feedback is very good until now.

♥ RESULT

The customers' Feedback or advice about the deployment, performance, benefits and management. It's better to have some evaluations from customer. Because the Auranet EAP offers a unified Wi-Fi for a multi-user business environment, Iskraemeco ensured that the TP-Link team engineered the Wi-Fi solution to handle heavy multi-user usage in large areas without encountering the same stability issues found with standard routers and access points designed for home use. It's the perfect fit for the business solution and what it required.

Warehouse Wall-Mounted

